

# Release and Installation Notes

## BemTrain Version 3.2.3.2



### Release Overview.

BemTrain update from version 3.2.2.3 to 3.2.3.2 delivers new features in the premium version for Qualification Scoreboards, a new Multi-Lap scoreboard and bug fixes for both standard and premium versions.

Please refer to the change list for full details of this release.

For all enquiries regarding BemTrain, please contact Lyndon Downing.

Email: [Lyndon.Downing@bigpond.com](mailto:Lyndon.Downing@bigpond.com)



## Changes from 3.2.3.0 to 3.2.3.2

- In the premium version, a new scoreboard is provided for Multi Lap races that shows the top 3 places and the last 5 to cross the start/finish line.

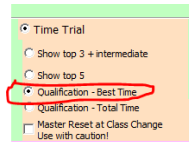


		Total Time	Lap Time	Lap
AUS	Merrick Conway	4:42.867	1:36.574	3
AUS	Troy Cassar-Daley	4:43.872	1:36.310	3
NZL	Tony Allamand	3:12.453	1:25.948	2
AUS	Troy Cassar-Daley	4:43.872	1:36.310	3
AUS	Merrick Conway	4:42.867	1:36.574	3
AUS	Peter Freeman	3:24.100	1:26.231	2
COL	Miguel Martinez	3:19.636	1:25.513	2
FRA	Jack Francis	3:18.772	1:25.185	2

- In the double column Multi Lap scoreboard (top 8 places and the last 8 to cross the start/finish line, when the time is 1 hour or greater, the total time display is reduced to a slightly smaller font to accommodate the additional digits. E.g. 1:34:56.765
- Corrects a fault that would allow opening of the Video Graphic scoreboard for a Multi Lap Race that is not compatible with that scoreboard layout.
- Update HTML header style for a consistent look with other BEM reports.

## Changes from 3.2.2.3 to 3.2.3.0

- In the premium version, an update to the Qualification Scoreboard provides two operator selectable options to better match a variety of event formats and an upgrade to cater for multiple runs for multiple classes.
  - Qualification – Best Time
    - Used to show the best time from one or multiple single runs for Gate or Loop start and for best lap time for velodrome mode (circuit) laps.
    - Timeout applied to incomplete runs which will be shown once on the scoreboard with “T” as the rank and then not shown for subsequent updates.



The left pane shows the top 8 in the class with the right pane showing the ranking for the last 8 starters.

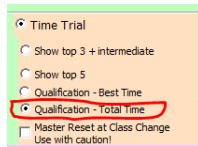
### Ranking after Run 1.

Top 8				On Track			
Women	TIME	RANK		Women	TIME	RANK	
RSA Libby McDonald	13.972	1		GBR Vanessa Dibley	14.362	2	
GBR Vanessa Dibley	14.362	2		NZL Michelle Wilson	15.837	4	
USA Primrose Worthington	14.873	3		USA Primrose Worthington	14.873	3	
NZL Michelle Wilson	15.837	4		IRL Catherine Murphy	17.655	7	
AUS Meridith Wiseman	16.113	5		AUS Helen Spencer	17.722	8	
ESP Juanita Rodriguez	17.497	6		AUS Meridith Wiseman	16.113	5	
IRL Catherine Murphy	17.655	7		ESP Juanita Rodriguez	17.497	6	
AUS Helen Spencer	17.722	8		RSA Libby McDonald	13.972	>	

Ranking display after the first rider (Libby McDonald) has completed her second run. Note the rank in the On Track section is shown as > because the time in that run is greater than her time in a previous run and therefore not ranked.

Top 8				On Track			
Women	TIME	RANK		Women	TIME	RANK	
RSA Libby McDonald	13.972	1		RSA Libby McDonald	15.062	>	
GBR Vanessa Dibley	14.362	2					
USA Primrose Worthington	14.873	3					
NZL Michelle Wilson	15.837	4					
AUS Meridith Wiseman	16.113	5					
ESP Juanita Rodriguez	17.497	6					
IRL Catherine Murphy	17.655	7					
AUS Helen Spencer	17.722	8					

- Qualification – Total Time for All runs  
Used to show the ranking from multiple runs where the ranking is based on cumulative time from all runs.



The left pane shows the top 8 in the class with the right pane showing the ranking for the last 8 starters.

### Ranking after Run 1

Top 8				On Track			
Men	TIME	LEADS		Men	TIME	RANK	
AUS Merrick Conway	13.379	1		AUS Troy Cassar-Daley	16.515	9	
GER Bruno Schmidt	13.662	1		COL Miguel Martinez	15.460	6	
FRA Jack Francis	14.226	1		AUS Peter Freeman	15.614	7	
NZL Tony Allamand	14.535	1		AUS Merrick Conway	13.379		
GBR Harold Jackson-Smythe	15.084	1		GBR Harold Jackson-Smythe	15.084	5	
COL Miguel Martinez	15.460	1		FRA Jack Francis	14.226	3	
AUS Peter Freeman	15.614	1		NZL Tony Allamand	14.535	4	
AUS Daniel Holloway	15.878	1		GER Bruno Schmidt	13.662	2	

### Ranking after 3 riders have completed their second run.

Top 8				On Track			
Men	TIME	LEADS		Men	TIME	RANK	
GER Bruno Schmidt	27.498	2		NZL Tony Allamand	30.760	3	
AUS Daniel Holloway	30.701	2		GER Bruno Schmidt	27.498		
NZL Tony Allamand	30.760	2		AUS Daniel Holloway	30.701	2	

- Correction for a scenario where an error would occur if the Soft Reset was clicked when the scoreboard was closed.
- Correction to a fault where the user validation may fail where a language other than English is selected.



### Changes from 3.2.2.2 to 3.2.2.3

- Create a separate folder for user defined BemTrain scoreboard logos to make it easier to manage user logos for BEM/RRD/Series reports, BEM Registration Screen and BemTrain Scoreboards. New folder is under the existing BEM User Data folder with the full path:  
C:\BEM\UserData\BemTrain Scoreboard bmp logos

### Changes from 3.2.2 to 3.2.2.2

- Correction to Pump Track scoreboards for Solo and Pursuit formats where lap times > 1 minute were not being displayed correctly.

### Changes from 3.1.3 to 3.2.2

- Enabled left and right user defined header logos for all scoreboard layouts.  
To use this facility, create .bmp graphics files with the following names in the C:\BEM\UserData folder.
  - BemTrainUser\_HL\_Logo.bmp (for Header Left)
  - BemTrainUser\_HR\_Logo.bmp (for Header Right)
- Provides a faster refresh rate of the Training screen on the Impatient (recommended) setting.
- Corrects a fault that may prevent upgrade codes being accepted when the selected language is other than English.
- New event format specific Pump Track scoreboards to show riders as they start, times at the first intermediate loop (if exists) and completed lap times and place.
- Updated Spanish translations.
- Make heading text alignment centred in all scoreboards for consistent appearance.
- Add a new scoreboard colour option using the Red Bull colour palate.
- Provides enhancements to the Time Trial scoreboard allowing for:
  - Loop 1 to be the start of run.
  - A common Start and Finish loop.
  - Multiple loops connected to the one decoder.
  - Display options to allow for either:
    - Top 5 qualifiers  
Latest to start  
Latest to finish
    - Top 3 qualifiers.  
Times and rankings at an intermediate loop.  
Latest to start  
Latest to finish.
- Scoreboard control form updated to allow viewing and status change of passing records.
- Run Mode options changed to a drop down list to allow for new options as the original option button selections were getting very crowded.
- Update to the SportsLists server interface for compliance with updated interface requirements for uploading near real time Training Reports for display on the



## SportsLists App.

The scope of these changes are:

- Change in upload format from HTML to JSON
- Each training run record is only uploaded once whereas with the previous HTML reports, all records were uploaded at every update.
- Notes:
  - Both the existing auto HTML report and new JSON report are generated and saved in the Auto Reports folder at every update when the “Create during capture” option is selected. Therefore if you were using the HTML auto report to view or display training runs, that option is still available.
  - The JSON report is uploaded to SportsLists when the “Upload to SportLists App” option is selected and a valid Upload Key (provided by SportsLists) has been entered.
  - With this change, BemTrain Session Files (.bts) must be built using BemTrain version 3.2.0 or later for the SportsLists upload to be enabled.
  - Should any users have BemTrain Session files built with an earlier version of BemTrain and need to have these converted to the latest template, please email the file(s) to [lyndon.downing@bigpond.com](mailto:lyndon.downing@bigpond.com)
- Update for compatibility with both 32bit and 64bit installations of Office 2010.
- Correction to the heading in the Lap Time Scoreboard from Place to Provisional.
- Correction to the HTML Velodrome Training Report where distance from intermediate sectors was not shown in the report.
- Correction to a scenario where a track sector distance of 0 may have been accepted as a legitimate value.



## Premium version additions.

In addition to the base package updates, the premium version of BemTrain delivers additional scoreboard modes for multi-lap and velodrome events, a multiple run Time Trial qualification mode which is compatible with the Red Bull Pump Track Open Session qualification rules and tailored scoreboard displays for Pump Track events run under UCI Rules 4.6.011 (Head to Head Pursuit), 4.6.012 (Head to Head Dual) and 4.6.012 (Solo Run) formats.

## Multi-lap Scoreboard

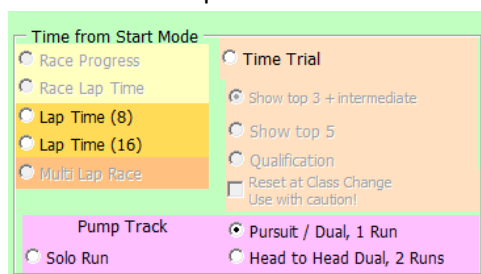
- Multi-lap scoreboard can be used with either staggered start or gate/gunshot start.
- Incremental times for complete run are shown.
- Intermediate loops for velodrome mode can either have a dedicated decoder per loop, siamesed loops to a single decoder or a combination of both.
- Scoreboard shows the top eight leaders in the left pane and the last eight completed laps in the right pane.



Top 8			Last Lap		
	TIME	Laps		TIME	Laps
NZL Alena GOLDBACH - EGGERT	3:21.305	2	AUS Erin LOCKWOOD	3:23.518	2
AUS Erin LOCKWOOD	3:23.518	2	NZL Alena GOLDBACH - EGGERT	3:21.305	2
AUS Indiana HENRIQUES CLIFTON	1:43.519	1	AUS Rachel GASKIN	1:44.496	1
AUS Rachel GASKIN	1:44.496	1	AUS Kiana BOTFIELD	1:45.721	1
AUS Kiana BOTFIELD	1:45.721	1	AUS Gemma-Lee THOMAS	1:47.571	1
AUS Matilda KELLY	1:47.337	1	AUS Jamie-Lee NOYCE	1:48.916	1
AUS Gemma-Lee THOMAS	1:47.571	1	AUS Matilda KELLY	1:47.337	1
AUS Jamie-Lee NOYCE	1:48.916	1	AUS Indiana HENRIQUES CLIFTON	1:43.519	1

## Pump Track Scoreboards

- Update the Scoreboard Control screen to provide separate selections and processing for each of the Pump Track modes.



Time from Start Mode

Race Progress

Race Lap Time

Lap Time (8)

Lap Time (16)

Multi Lap Race

Time Trial

Show top 3 + intermediate

Show top 5

Qualification

Reset at Class Change

Use with caution!

Pump Track

Solo Run

Pursuit / Dual, 1 Run

Head to Head Dual, 2 Runs



- Example of Pump Track Head to Head Dual after both riders have completed both runs using the Video Scoreboard option.

BMX Event Manager by Lyndon.Downing @bigpond.com

STAGE RESULT				TIME	RUN	INDIVIDUAL RUNS					
JPN	Sae HATAKEYAMA			33.973	1+2	JPN	Sae HATAKEYAMA			17.003	2
ESP	Ximena RUBIO			34.312	1+2	ESP	Ximena RUBIO			17.180	2
						JPN	Sae HATAKEYAMA			16.970	1
						ESP	Ximena RUBIO			17.132	1





## Installing BemTrain 3.2.3.2

### Prerequisites

Please check that your PC meets the requirements listed in the Operating System and Microsoft Office sections before installing BemTrain and that you have an Upgrade Code for this version.

Note that BemTrain version 3.0.x and later will not run Session files created with versions 2.2.x. and earlier.

If you require access to training data from an earlier Session file after installing the later BemTrain, please email the session file(s) to [lyndon.downing@bigpond.com](mailto:lyndon.downing@bigpond.com) for conversion to the later format.

### User and Upgrade Codes

For updates and new installations, an upgraded code is required to complete the installation.

For first time installations, a User Code is required in addition to the upgrade code.

If you do not have you User Code or Upgrade Code, please contact [lyndon.downing@bigpond.com](mailto:lyndon.downing@bigpond.com)

### Removal of Earlier Version(s)

All previous versions of BemTrain MUST be uninstalled before installing this update.

Click Start, Control Panel, Programs and Features (Add and Remove Programs in Windows XP)

[Uninstall or change a program](#)

To uninstall a program, select it from the list and then click Uninstall, Change or Repair.

Organise ▾ Uninstall Change Repair				
Name	Publisher	Installed On	Size	Version
 BemTrain	Bemman	13/08/2020	3.35 MB	3.2.2.3

In the Programs and Features window, Right click on BemTrain then Left click on Uninstall. Answer Yes to any prompt required to complete the removal of the earlier version.



## Install BemTrain

From the <https://www.moto-sheets.com/index.php?p=manuals> site, download the files:

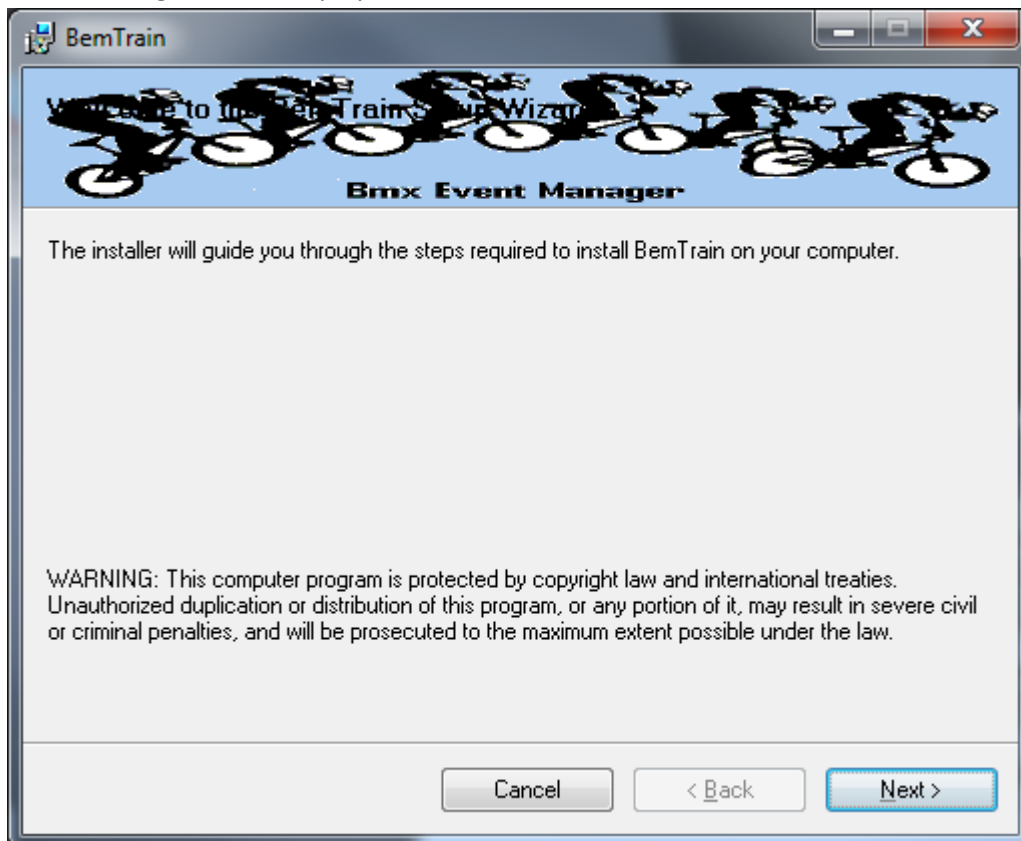
**6d BemTrain Production 3-2-3-2** (zip file)

**6e BemTrain Release and Installation Notes – Version 3-2-3-2** (pdf file)

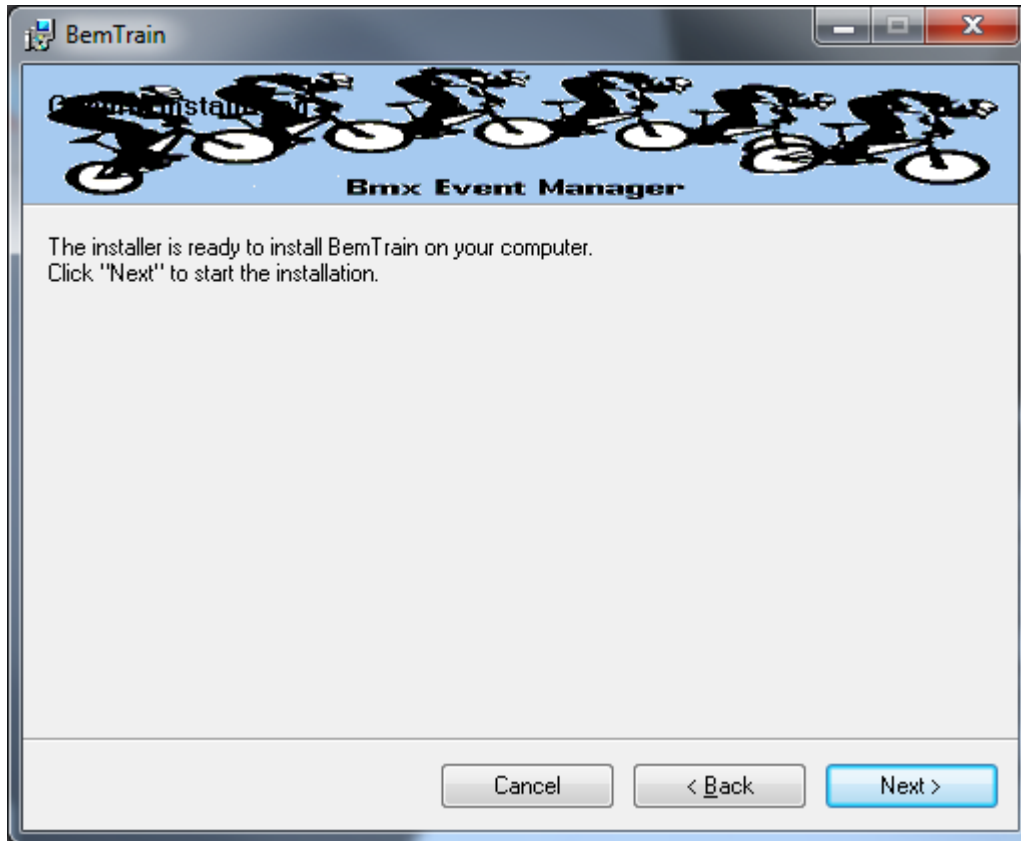
Unzip and save the **6d BemTrain Production 3-2-3-2.msi** file contained in the **6d BemTrain Production 3-2-3-2** file.

Double click on the **6d BemTrain Production 3-2-3-2.msi** file to start the installer.

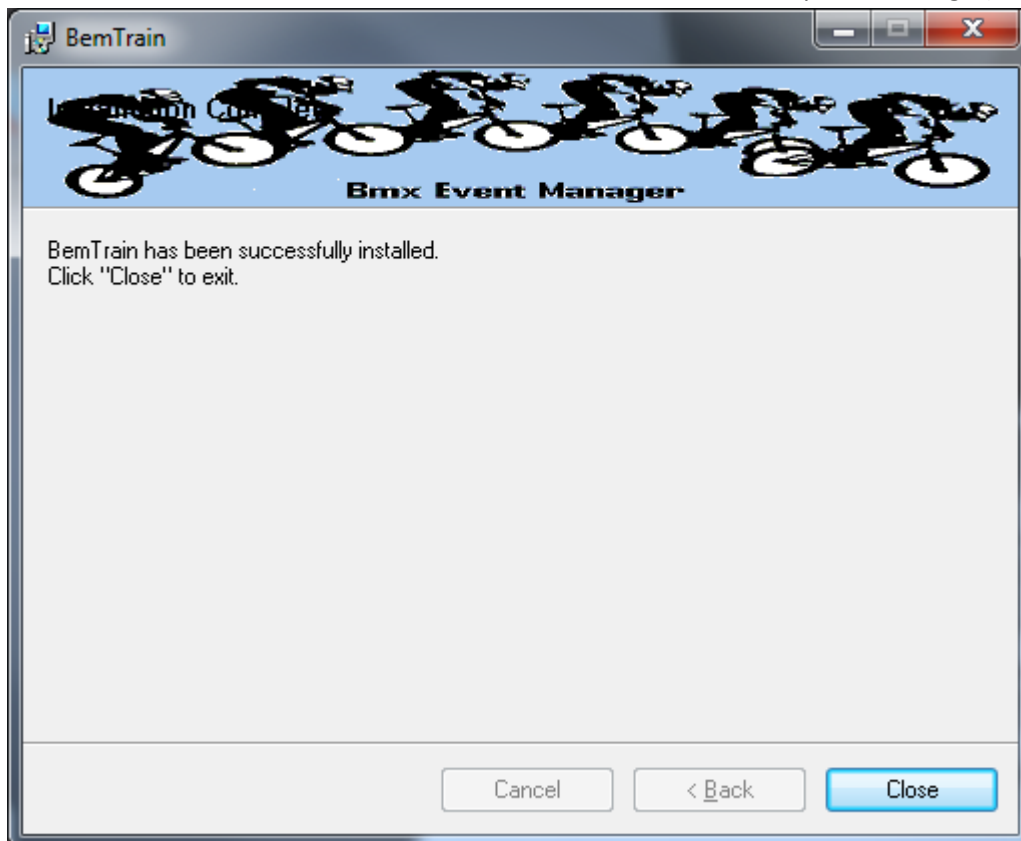
The following screen is displayed.



Click Next to proceed and the following screen is shown



Click Next to start the installation and wait for the Installation Complete Message (below)



Note that the installation is hardcoded into the folder:

C:\BEM\Programs\BemTrain

If not done previously as per step 2 on page 15 of this document, Office 2007 and Office 2010 users should include the path C:\BEM\Programs in the Excel list of trusted locations.

The installation procedure installs the BemTrain program, adds BemTrain in the Bmx Event Manager group in the Programs menu and provides a shortcut on the Desktop.



If you are installing BemTrain for the first time, please refer to the instructions in the distribution e-mail to install the configuration file.

### User Logo Files.

If you have previously setup user defined logo files for display on scoreboards for BemTrain version 3.2.2.2 or earlier, then these files must be moved to a new folder for versions 3.2.2.3 and later.

I.e. if you have files named **BemTrainUser\_HL\_Logo.bmp** and/or **BemTrainUser\_HR\_Logo.bmp** in folder **C:\BEM\UserData** then please move these files to the folder

**C:\BEM\UserData\BemTrain Scoreboard bmp logos**

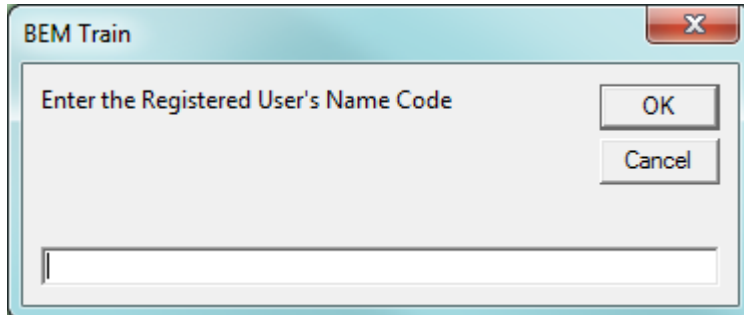


## First Run Setup

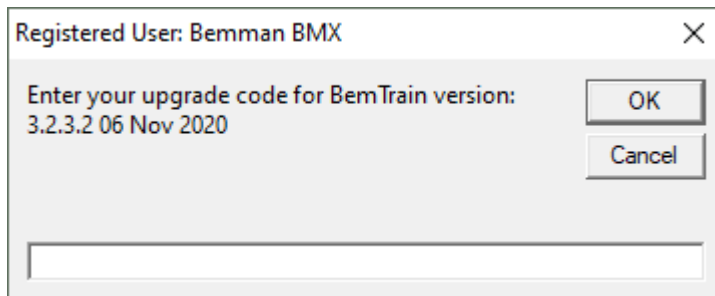
Double click on the BemTrain icon to start the program.

First time installation users will receive the following prompt to enter the Registration Name received with your order confirmation.

If you don't have this information, please contact [Lyndon.Downing@bigpond.com](mailto:Lyndon.Downing@bigpond.com)



All users will receive the following prompt to enter the upgrade code the first time the upgrade is run:



Enter the code from your release email and click OK to activate the update.

If you don't have this information, please contact [Lyndon.Downing@bigpond.com](mailto:Lyndon.Downing@bigpond.com)



## Operating System

Windows XP, Vista (OK but best avoided if possible), Windows7 and for Windows 8, 8.1 and Windows 10, full versions, not the RT tablet versions. 32 or 64 bit installations of Windows are OK. Use of the Professional rather than the Home versions of Windows are strongly recommended for the superior networking capability.

## Microsoft Office

Office 2003, Office 2007 or Office 2010.

BemTrain does not run on Office 2013 or later as Microsoft have not maintained full backwards compatibility with Office 2010, 2007 and 2003 versions.

For new PCs that come pre-installed with an Office version later than 2010, the following options are suggested.

1. If you don't have a specific requirement for the new facilities in the pre-installed version Office and haven't paid the licence fee for that:
  - a. Totally remove Office from the PC.
  - b. Buy and install a legitimate version of Office 2010 from eBay or from a download retailer such as [https://www.ebay.com.au/p/30522352/microsoft-office-2010-pro-plus-32-64-bit?gps=1&id=115926669379&keywords=&gclid=CjwKCAjwm4rqBRBUeIwAwaWjjK60coZew2EOxi9W\\_eodOHfGc8FKc4vya1IbS3VT41eix1YEFxqnBoCRJgQAvD\\_BwE](https://www.ebay.com.au/p/30522352/microsoft-office-2010-pro-plus-32-64-bit?gps=1&id=115926669379&keywords=&gclid=CjwKCAjwm4rqBRBUeIwAwaWjjK60coZew2EOxi9W_eodOHfGc8FKc4vya1IbS3VT41eix1YEFxqnBoCRJgQAvD_BwE)  
or  
[https://softwaregeeks.co.uk/product/office2010proplus/?gclid=EAAlQobChMI07\\_I7NXN4AIVGK6WCh2pWwWhEAYYBCABEgJcpvD\\_BwE](https://softwaregeeks.co.uk/product/office2010proplus/?gclid=EAAlQobChMI07_I7NXN4AIVGK6WCh2pWwWhEAYYBCABEgJcpvD_BwE)  
which will be significantly cheaper than the Office 365 / 2016 licence).
2. If you need to keep the pre-installed Office version on the PC with either Win7, Win8 or Win 10.
  - a. Do a partial installation of Office 2010 installing only Excel 2010 which will happily co-exists with later Office versions.
  - b. To get BemTrain to open with Office 2010 when you also have later Office versions installed then either:
    - i. Open Excel 2010 before clicking on the BemTrain icon.
    - ii. Set up your own shortcuts to BemTrain that direct to Office 2010.  
I.e. in the Shortcut Target use

### BemTrain

Typical Shortcut Target when Office 2010 is a 32 bit installation

"C:\Program Files (x86)\Microsoft Office\Office14\EXCEL.EXE" "C:\BEM\Programs\BemTrain\BemTrain.xls"

Typical Shortcut Target when Office 2010 is a 64 bit installation

"C:\Program Files\Microsoft Office\Office14\EXCEL.EXE" "C:\BEM\Programs\BemTrain\BemTrain.xls"

To add the shortcut to the start menu, copy and paste or create the shortcut in the following 'Hidden' folder:

C:\Users\username\AppData\Roaming\Microsoft\Windows\Start Menu\Programs

Now open Start Menu > All apps and locate the shortcut(s) you placed. Right-click on it and select Pin to Start.



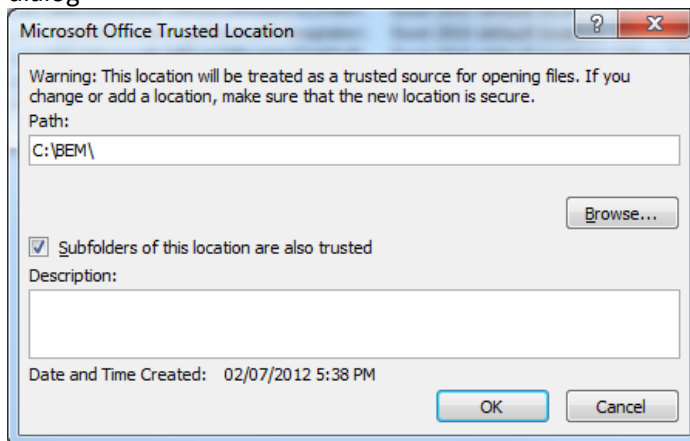
## Microsoft Updates

The following preparatory actions if not already implemented on your PC will avoid compatibility problems.

1. If you do not have Windows Update enabled for Auto Update of Windows and other products from Microsoft Update, download and install the latest applicable Office 2003 / 2007 / 2010 service packs and updates. This is very important as there is a history of unpredictable operation should the latest Microsoft updates not be installed.
2. For users running Office 2007 and 2010, include the C:\BEM path and any other locations where you save BEM or BemTrain files in the list of Excel Trusted Locations.

Method:

- 2.1. Open Excel.
- 2.2. Select **File** then **Options**.
- 2.3. Select **Trust Center**.
- 2.4. Click on **Trust Center Settings...** button.
- 2.5. Click on **Add new location...** button and add any required paths and select the **Subfolders of this location are also trusted** if appropriate and then click on OK to accept and close the dialog



- 2.6. . • Click on OK to close each of the dialogs until back in Excel which now can be closed.

=== End of Document ===

